

PaRIS SURVEY RESULTS



These are some of the results from the International Survey of People living with Chronic Conditions (PaRIS) in which your practice participated, during 2023. This survey was initiated by the Organisation for Economic Co-operation and Development (OECD).

For more results from the PaRIS survey, please visit www.oecd.org/health/paris.

PARTICIPANTS IN THE SURVEY

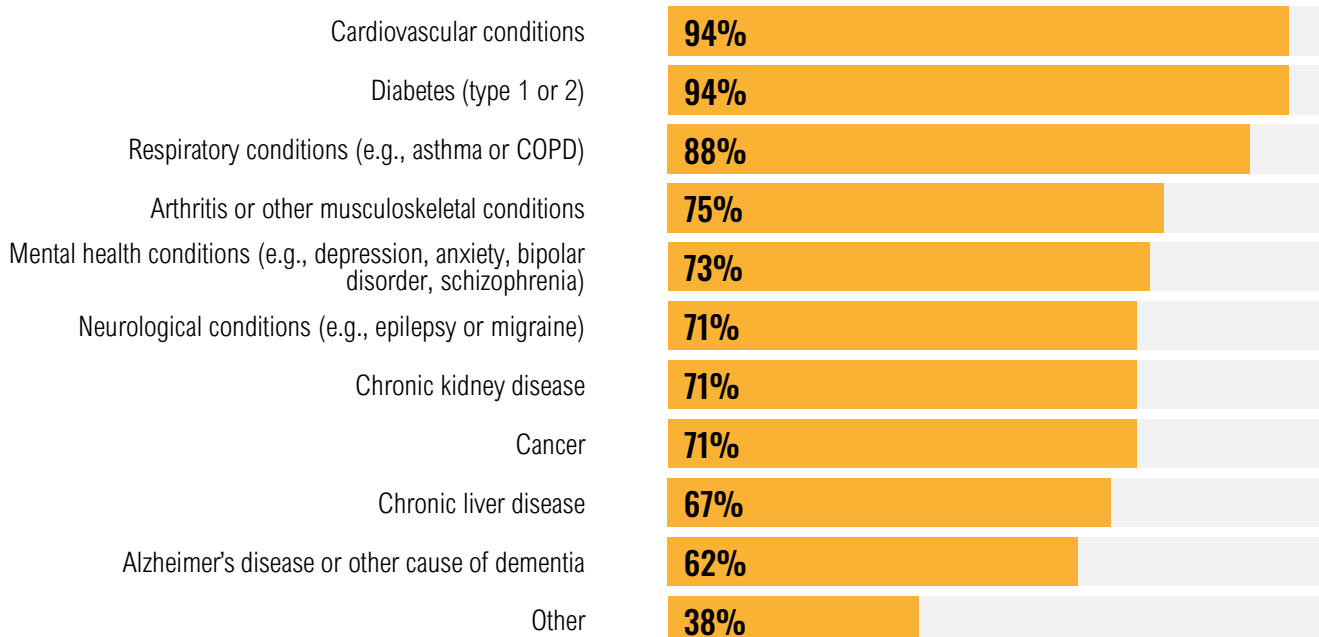


PARTICIPATING PRACTICES

Care provided

Do you provide care in your practice (e.g., regular appointments, tests and reviews) for any of the following chronic conditions?

Question asked of all primary care practices taking part in Luxembourg.



PARTICIPATING PRACTICES

Professional(s) who coordinate(s) care for patients with chronic conditions

Who is in charge of coordinating care of patients with chronic conditions at your practice?

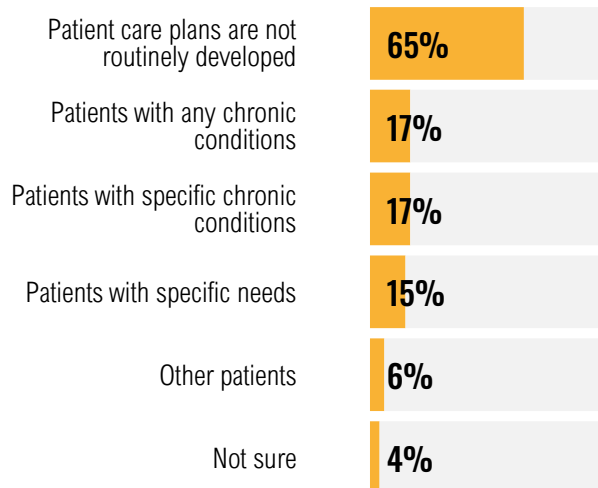
Question asked of all primary care practices taking part in Luxembourg.



Patient care plans routinely developed for...

Are patient care plans routinely developed at your practice for any of the following patient groups?

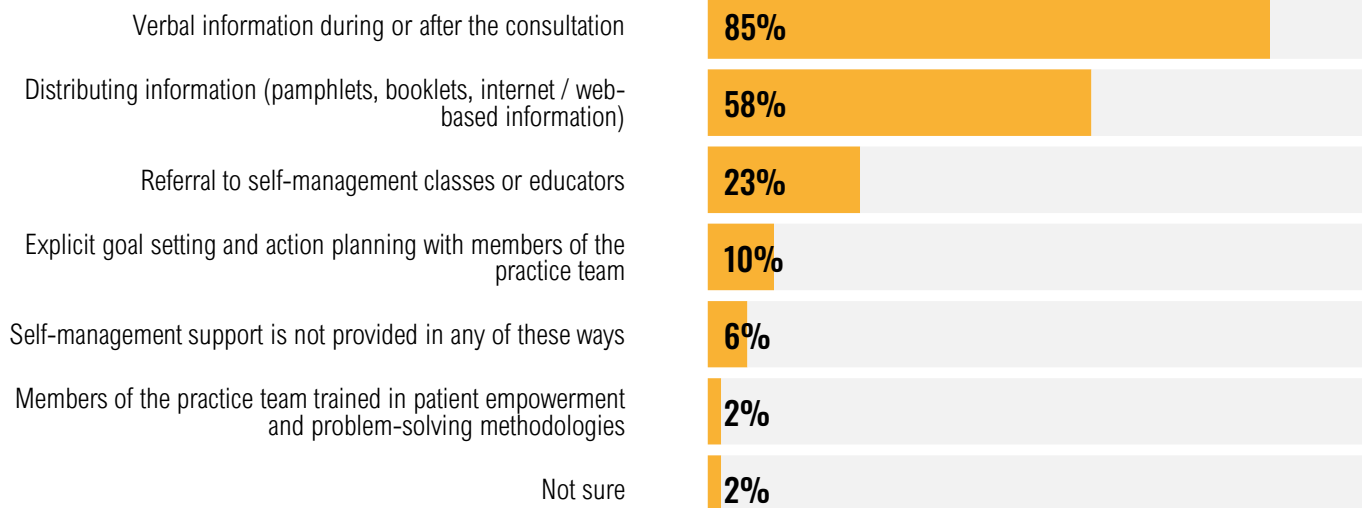
Question asked of all primary care practices taking part in Luxembourg.



Self-management support is provided to patients with chronic conditions by...

Which of the following statements best describe how self-management support is provided to patients with chronic conditions?

Question asked of all primary care practices taking part in Luxembourg.

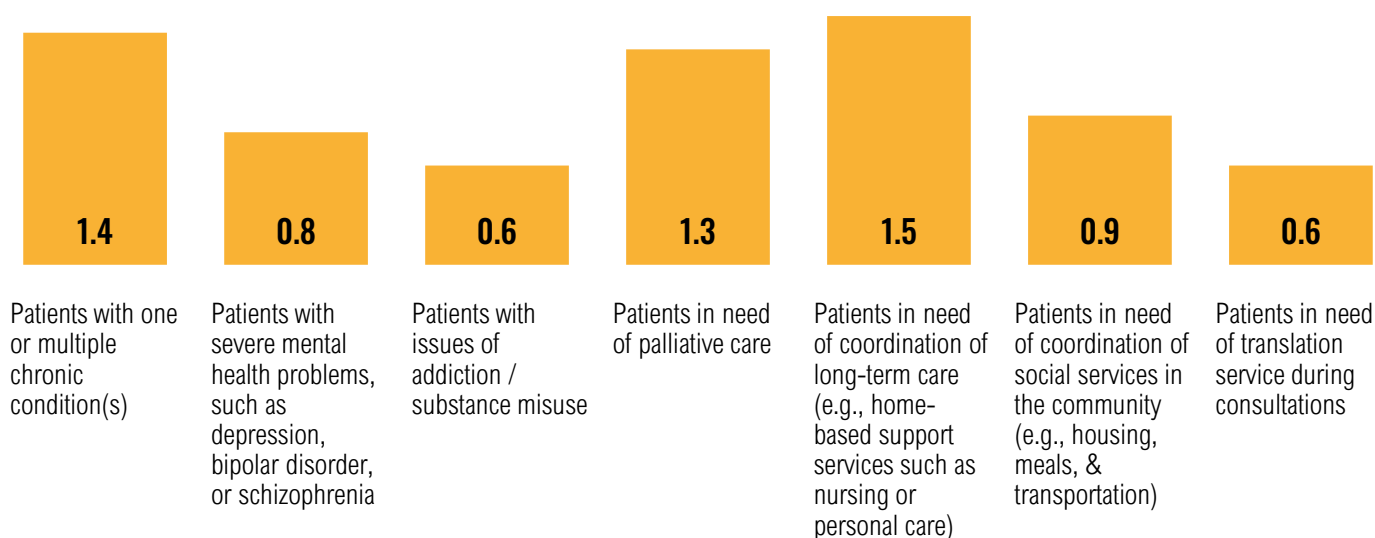


PARTICIPATING PRACTICES

Preparedness of the practice to coordinate care with other health and social care providers

How prepared is your practice to coordinate care with other health and social care providers for the following groups of patients?

Question asked of all primary care practices taking part in Luxembourg.



Preparedness scores: 0 = Not prepared; 1 = Somewhat prepared; 2 = Well prepared; ? = Not sure / Not answered

■ All primary care practices who took part in Luxembourg

HEALTH OF PARTICIPATING PATIENTS

Patient-reported health conditions

Have you ever been told by a doctor that you have any of the following health conditions?

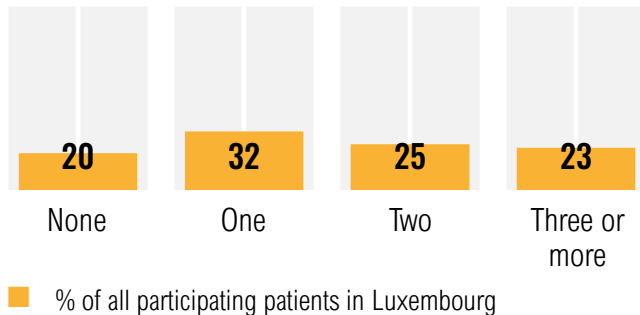
High blood pressure, Cardiovascular or heart condition, Diabetes (type 1 or 2), Arthritis or ongoing problem with back or joints, Breathing condition (e.g., asthma or COPD), Alzheimer's disease or other cause of dementia, Depression, anxiety or other mental health condition (e.g., bipolar disorder or schizophrenia), Neurological condition (e.g., epilepsy or migraine), Chronic kidney disease, Chronic liver disease, Cancer (diagnosis or treatment in the last 5 years), Other long-term problem(s), I have never been told by a doctor that I have any of these problems.

Question asked of all patients taking part in Luxembourg.

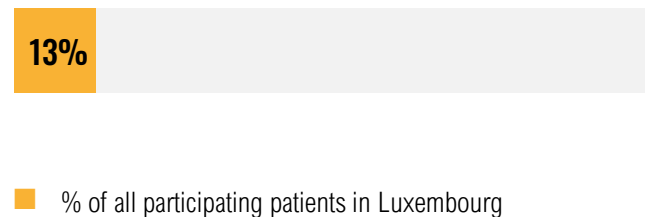
HEALTH OF PARTICIPATING PATIENTS

Patient-reported health conditions

Number of self-reported chronic conditions



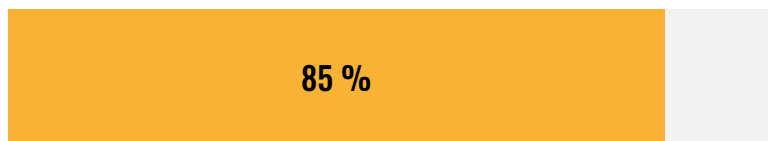
Proportion of patients reporting one or more mental health condition(s)



Patient-reported quality of life

In general, would you say your quality of life is excellent, very good, good, fair, poor?
Question asked of patients who reported at least one chronic condition in Luxembourg.

% of patients who answered excellent or very good or good.



patients who reported at least one chronic condition in Luxembourg

Patient-reported general health

In general, would you say your health is excellent, very good, good, fair, poor?
Question asked of patients who reported at least one chronic condition in Luxembourg.

% of patients who answered excellent or very good or good.



patients who reported at least one chronic condition in Luxembourg

HEALTH OF PARTICIPATING PATIENTS

Patient-reported physical health

In general, how would you rate your physical health? Excellent, very good, good, fair, poor.

Question asked of patients who reported at least one chronic condition in Luxembourg.

% of patients who answered excellent or very good or good.



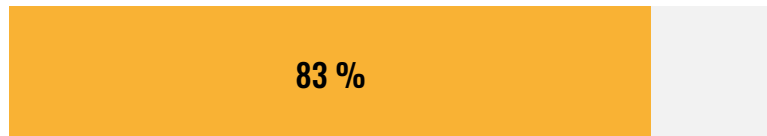
patients who reported at least one chronic condition in Luxembourg

Patient-reported mental health

In general, how would you rate your mental health, including your mood and your ability to think? Excellent, very good, good, fair, poor.

Question asked of patients who reported at least one chronic condition in Luxembourg.

% of patients who answered excellent or very good or good.



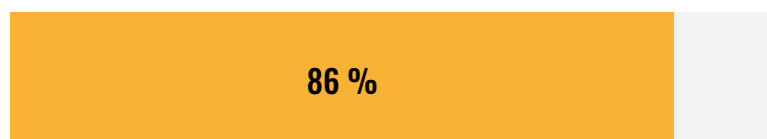
patients who reported at least one chronic condition in Luxembourg

Patient-reported social functioning

In general, please rate how well you carry out your usual social activities and roles? (This includes activities at home, at work and in your community, and responsibilities as a parent, child, spouse, employee, friend, etc.): excellent, very good, good, fair, poor.

Question asked of patients who reported at least one chronic condition in Luxembourg.

% of patients who answered excellent or very good or good.



patients who reported at least one chronic condition in Luxembourg

CARE EXPERIENCE OF PARTICIPATING PATIENTS

Experience of care

Person-centred coordinated care is care and support that is guided by, and organised effectively around, the needs and preferences of individuals. The person-centred care index and the coordinated care index are based on answers given by participating patients with one or more self-reported chronic condition(s) on a number of questions. The indices can range between 0 (no positive experience) and 100 (highest level of positive experience).

Question asked of patients who reported at least one chronic condition in Luxembourg.

Person-centred Care Index

70.9
Luxembourg

Questions used to calculate the person-centred care index are about the experience of your patients regarding the involvement in decisions about their care, support and usefulness of information from their provider and whether they are considered as a 'whole person' by their provider.

Coordinated Care Index

56.7
Luxembourg

Questions used to calculate the coordinated care index are about the experience of your patients regarding their care plan (if any) and whether they think the health care system is organized in a way that works for them.

Quality of medical care over the last 12 months

Overall, how do you rate the medical care that you have received in the past 12 months from your primary care centre?

Question asked of all patients taking part in Luxembourg.

% of all participating patients in Luxembourg



- Excellent
- Very good
- Good
- Fair
- Poor
- Not applicable
- Not sure

Confidence managing health and wellbeing

How confident are you that you can manage your own health and wellbeing?

Question asked of patients who reported at least one chronic condition in Luxembourg.

% of patients who answered very confident or confident



patients who reported at least one chronic condition in Luxembourg

CHARACTERISTICS OF PARTICIPATING PRACTICES AND PATIENTS

Practice characteristics

	All practices
Practice type	
Solo practice (a practice that is run by a single physician or health care professional)	33%
Group practice with own patients (two or more physicians or health care professionals who share premises but do not share a common pool of patients)	15%
Group practice with shared patients (two or more physicians or health care professionals who share a common pool of patients)	40%
Multi-specialty group practice (a practice that is run by two or more physicians or health care professionals who have different specialisations)	10%
Other	2%
Not sure	0%
Practice type	
Luxembourg-City	21%
City	29%
Rural area	48%
Not sure	2%

Patient characteristics

	All participating patients in Luxembourg		All participating patients in Luxembourg
Patient age		Patient country of birth	
45-54 years old	30%	Luxembourg	59%
55-64 years old	36%	Other country	41%
65-74 years old	22%	Patient education level (highest level of attained education)	
75-84 years old	9%	Low	30%
85 years or older	3%	Middle	35%
Prefer not to say	0%	High	35%
Patient gender			
Female	52%		
Male	48%		
Other / prefer not to say	0%		

To protect patient privacy, data is not presented at the practice level.