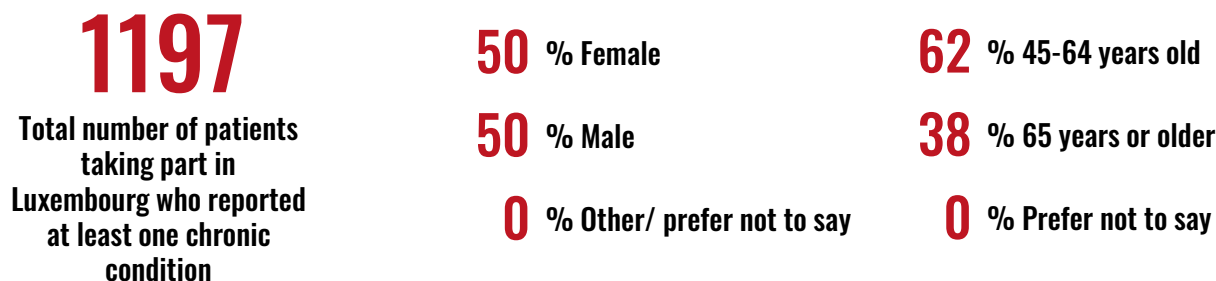


PaRIS SURVEY RESULTS FOR YOUR COUNTRY



These are some of the results from the International Survey of People living with Chronic Conditions (PaRIS). For more results from the PaRIS survey please visit www.oecd.org/health/paris.

PARTICIPANTS IN THE SURVEY

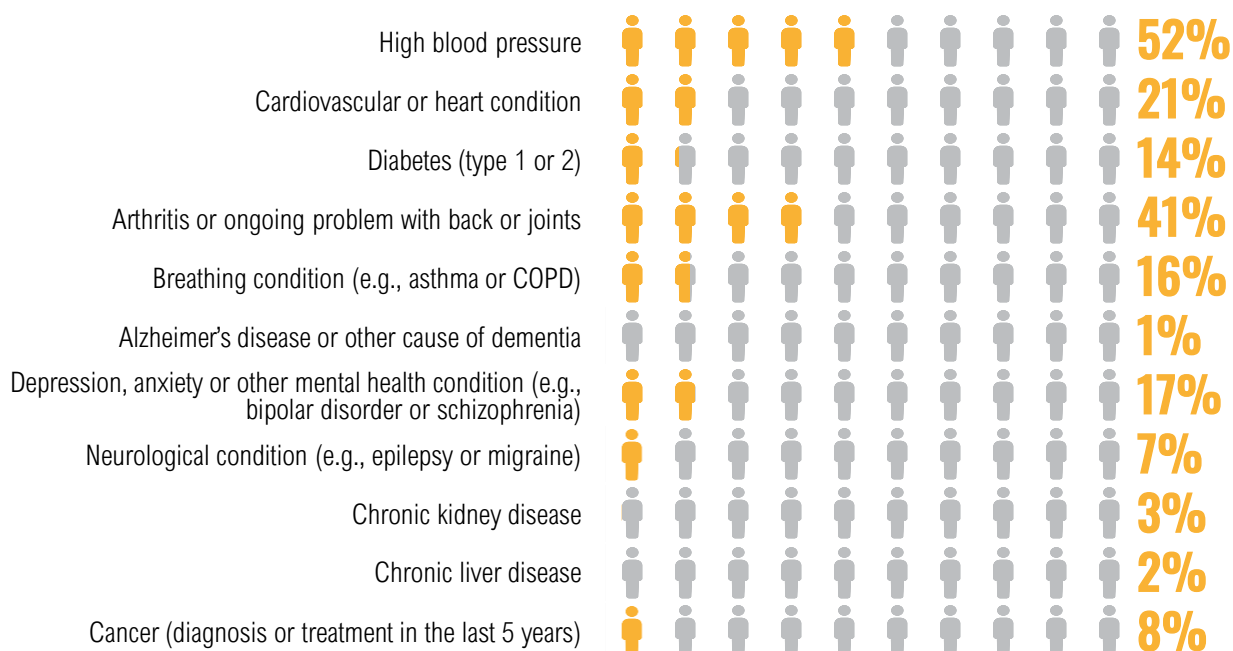


CHARACTERISTICS OF PARTICIPATING PATIENTS WHO REPORTED AT LEAST ONE CHRONIC CONDITION

Patient-reported health conditions

Question: Have you ever been told by a doctor that you have any of the following health conditions?

Respondent base: Patients who reported at least one chronic condition in Luxembourg.



KEY INDICATORS OF PARTICIPATING PATIENTS

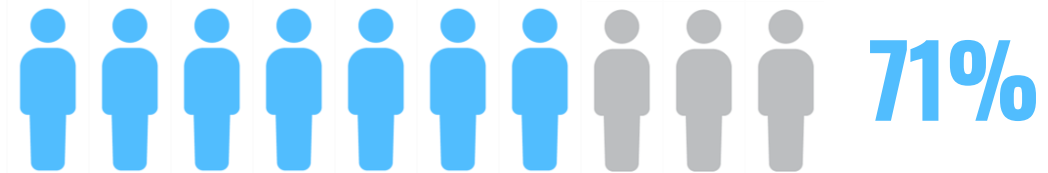
Patient-reported general health

Question: In general, would you say your health is...?

Answer options: Excellent, very good, good, fair, poor.

Respondent base: Patients who reported at least one chronic condition in Luxembourg

% of patients who answered excellent or very good or good.



Patient-reported quality of life

Question: In general, would you say your quality of life is...?

Answer options: Excellent, very good, good, fair, poor.

Respondent base: Patients who reported at least one chronic condition in Luxembourg

% of patients who answered excellent or very good or good.



Patient-reported social functioning

Question: In general, please rate how well you carry out your usual social activities and roles? (This includes activities at home, at work and in your community, and responsibilities as a parent, child, spouse, employee, friend, etc.).

Answer options: Excellent, very good, good, fair, poor.

Respondent base: Patients who reported at least one chronic condition in Luxembourg

% of patients who answered excellent or very good or good.



KEY INDICATORS OF PARTICIPATING PATIENTS

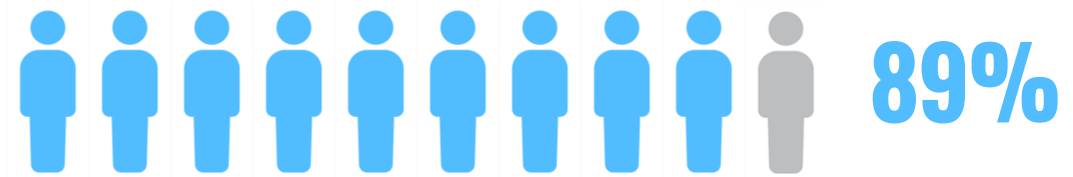
Quality of medical care over the last 12 months

Question: Overall, how do you rate the medical care that you have received in the past 12 months from your primary care centre?

Answer options: Excellent, very good, good, fair, poor.

Respondent base: Patients who reported at least one chronic condition in Luxembourg

% of patients who answered excellent or very good or good.



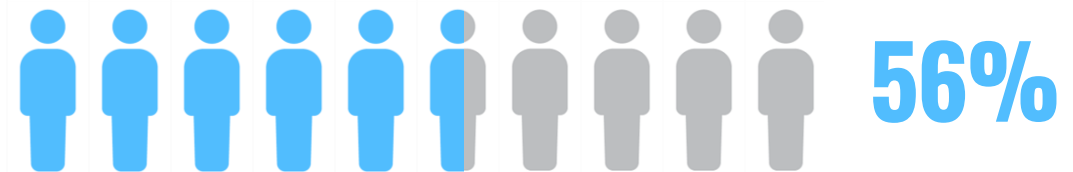
Confidence in managing own health and wellbeing

Question: How confident are you that you can manage your own health and wellbeing?

Answer options: Very confident, confident, somewhat confident, not confident at all.

Respondent base: Patients who reported at least one chronic condition in Luxembourg

% of patients who answered very confident or confident.



Trust in health system

Question: How strongly do you agree or disagree that the health care system can be trusted?

Answer options: Strongly agree, agree, neither agree nor disagree, disagree, strongly disagree.

Respondent base: Patients who reported at least one chronic condition in Luxembourg

% of patients who answered strongly agree or agree.

